



**KELULUT SATU ANUGERAH:
IBRAH *TEKNOLOGI HALAL*
PENGHASILAN PRODUK HILIRAN
*DARIPADA MADU KELULUT***



**Profesor Ir. Ts. Dr Ahmad Ziad Bin Sulaiman
Fakulti Bio-Kejuruteraan & Teknologi
Universiti Malaysia Kelantan (UMK)**

Dalam Al-Quran terdapat satu surah yang dinamakan An-Nahl bererti lebah berdasarkan firman Allah dalam ayat 68 dan 69 ertinya:

وَأَوْحَىٰ رَبُّكَ إِلَى النَّحْلِ أَنِ اتَّخِذِي مِنَ الْجِبَالِ بُيُوتًا وَمِنَ الشَّجَرِ وَمِمَّا يَعْرِشُونَ
 ثُمَّ كُلِي مِن كُلِّ الثَّمَرَاتِ فَاسْلُكِي سُبُلَ رَبِّكِ ذُلُلًا يَخْرُجُ مِنْ
 بُطُونِهَا شَرَابٌ مُّخْتَلِفٌ أَلْوَانُهُ فِيهِ شِفَاءٌ لِلنَّاسِ إِنَّ فِي ذَلِكَ لَآيَةً لِّقَوْمٍ
 يَتَفَكَّرُونَ

Maksudnya: “Dan Tuhanmu mengilhamkan kepada lebah: ‘Buatlah sarang-sarang di bukit-bukit, di pohon-pohon kayu, dan di tempat-tempat yang dimana manusia berada.’ Kemudian makanlah dari tiap-tiap (macam) buah-buahan dan tempuhlah jalan Rabbmu yang telah dimudahkan (bagimu). Dari perut lebah itu keluar minuman (madu) yang bermacam-macam warnanya, di dalamnya terdapat ubat yang menyembuhkan bagi manusia. Sesungguhnya pada yang demikian itu benar-benar terdapat tanda (kebesaran Tuhan) bagi orang-orang yang memikirkan.

Sabda Rasulullah SAW

Diriwayatkan dari Abdullah bin Amr bin al-Ash. Sesungguhnya dia mendengar Rasul SAW bersabda: Demi Dzat yang jiwa Muhammad di tangan-Nya, perumpamaan orang mu`min bagaikan lebah. Lebah itu memakan makanan yang baik-baik dan mengeluarkan yang baik pula. Tidak jatuh tatkala menghinggapi dan tidak mematahkan yang dihinggapi (Ahmad, Al-Hakim, dan Al-Bazzar).

SATU ANUGERAH BUAT UMAT MANUSIA

1. **Hinggap di tempat yang bersih dan menyerap hanya yang bersih**
2. **Mengeluarkan yang bersih.**
3. **Tidak pernah merosakkan**
4. **Bekerja keras**
5. **Bekerja secara jemaah dan tunduk pada satu pimpinan**
6. **Tidak pernah melukai kecuali kalau diganggu**

Ciri - Ciri



sepasang sayap di
punggungnya

3 pasang kaki
beruas- ruas

Ukuran

3 – 8 mm dan sangat
lincah

Kaki

Kepala

Sepasang mata yang sangat lebar
Sepasang antena dengan mulut muncung
panjang

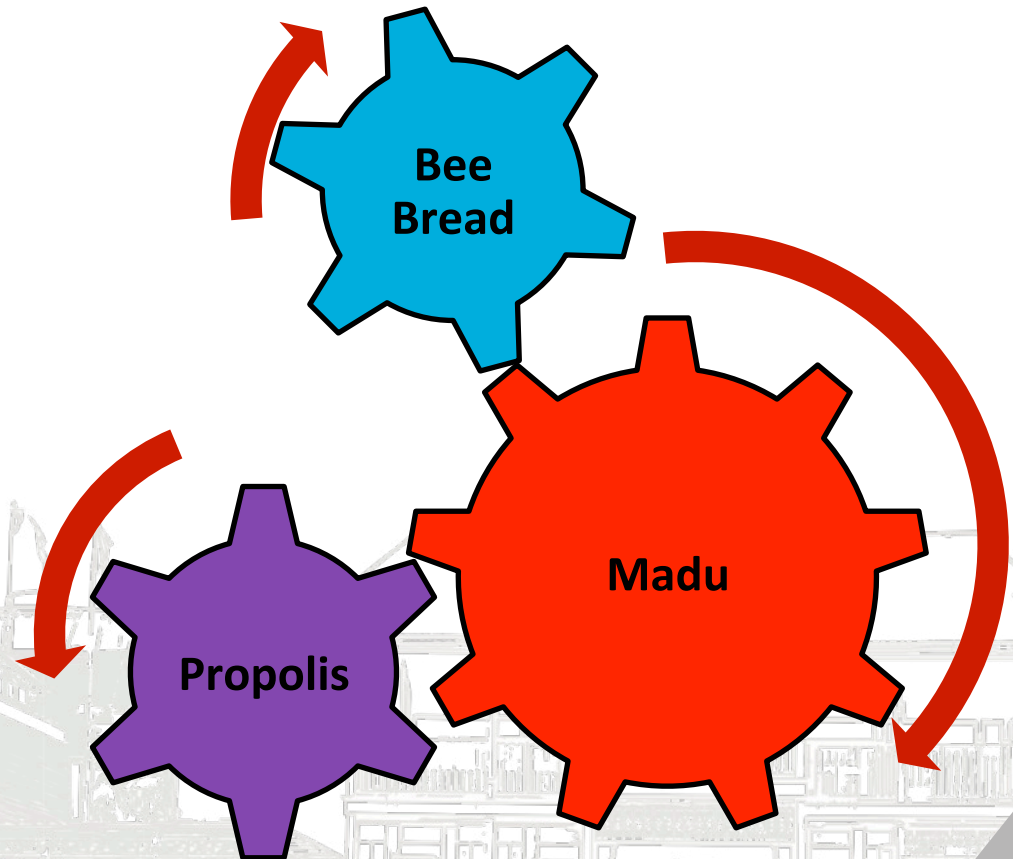
Badan

Spesis

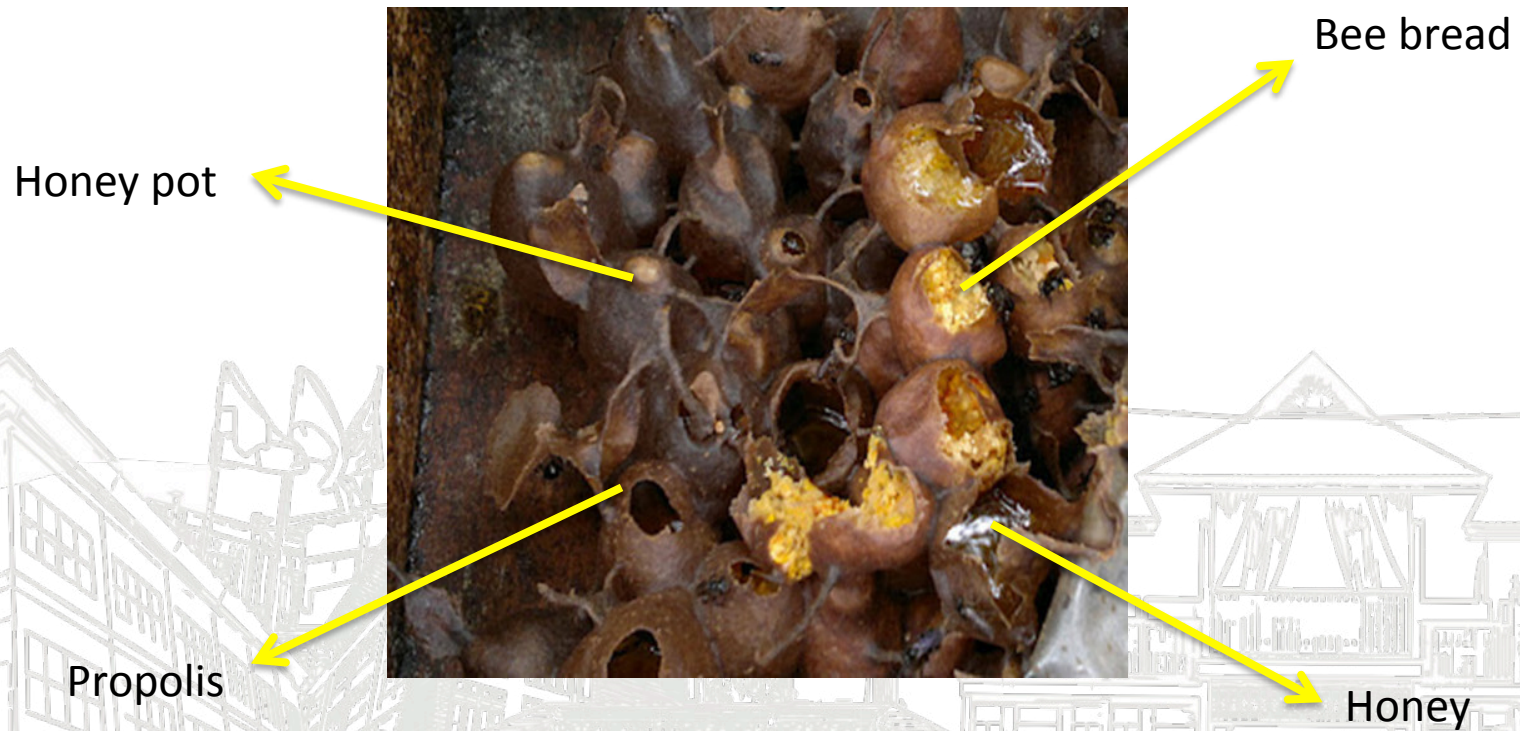
- Daripada kajian yang dijalankan diseluruh pelusuk dunia, telah ditemui 150 spesies lebah kelulut antaranya **Trigona Scaptotrigona, Trigona laeviceps, Trigona apicalis, Trigona thorasica, Trigona itama** Dan lain-lain lagi.

Komponen sarang kelulut

Sarang Lebah kelulut mengandungi komponen yang menyimpan kandungan khasiat yang tinggi



- Stingless bees are very special insects as it can produce three different products; honey, propolis and bee bread



Khasiat madu kelulut

Asid fenilpropanoik, asid protocatechuik dan asid 4-hidroksifenilasetik adalah di antara bahan utama yang telah berjaya dikenalpasti dalam madu kelulut. Bahan-bahan ini tergolong dalam kumpulan **asid fenolik bebas** yang merupakan bahan aktif yang boleh bertindak sebagai **anti-kanser dan anti-oksidan** dan bahan ini lebih mudah untuk diserap dalam tubuh manusia berbanding bahan aktif lain seperti flavonoid.

Benefits of Stingless Bee Honey

Effective pollinator

- For both wild and cultivated crops ⁸

Antimicrobial properties

- able to inhibit the growth of pathogens and is effective to treat bacterial infection ⁹

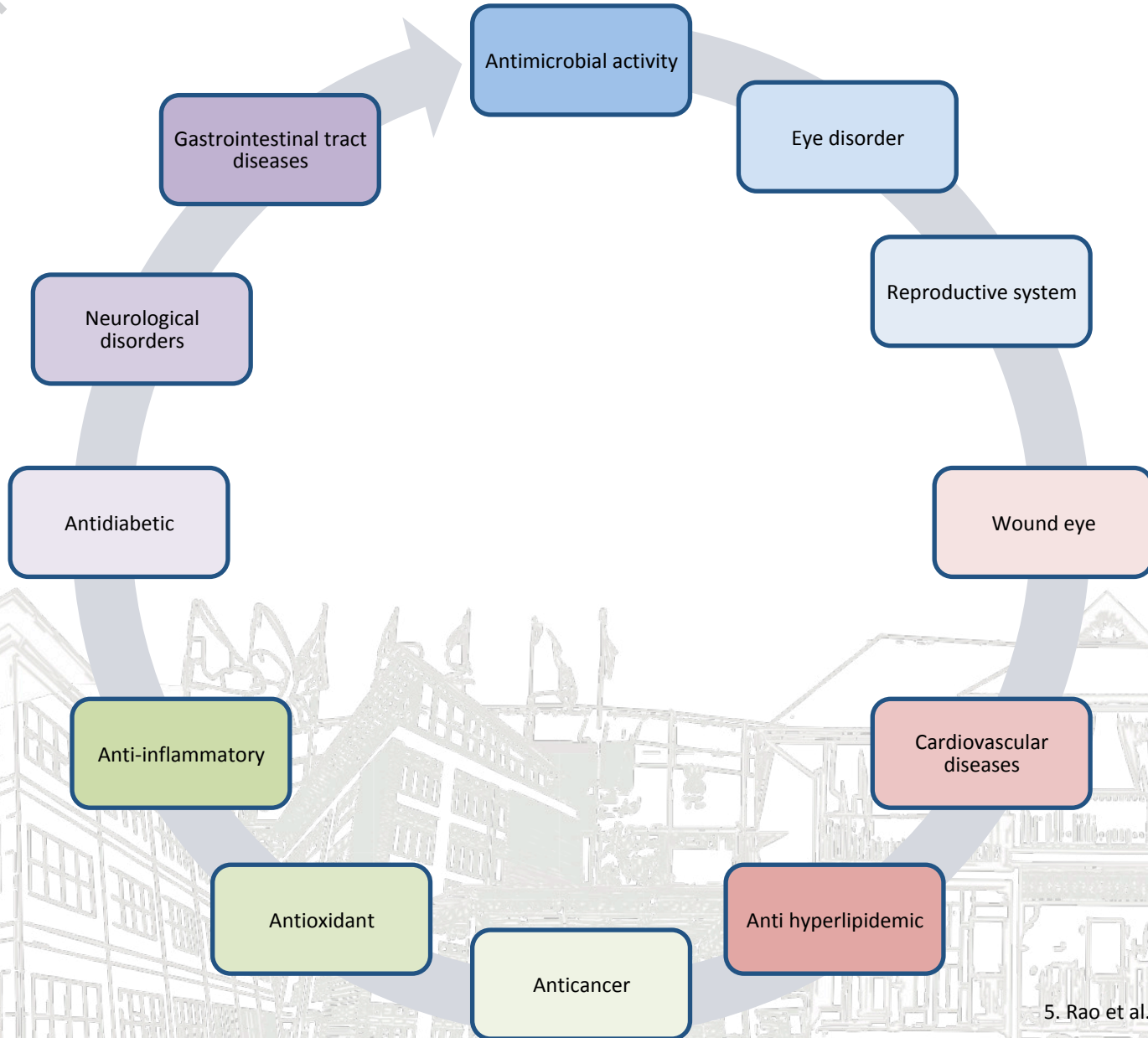
Rich in antioxidants

Enhance immune system, slowing the growth of cancer cell, relieving sore throat, coughs and colds.

Can be used as restorative after an illness and to sooth pain

Act as antiseptic, hasten healing, effective in curing burns, carbuncle, boils and diabetic wounds¹⁰

Therapeutic (healing) potency of honey ⁵



5. Rao et al., 2016

KANDUNGAN NUTRIEN

- Vitamins: Provitamin A, B-1 Thiamin, B-2 Riboflavin, B-3 Nancin, B-5, B-6 Pyridoxine, B-12 (cyanocobalamine), Pantothenic acid, **Vitamin C**, **F**, **Vitamin D**, **Vitamin E**, Vitamin H, Vitamin K, Vitamin PP, Folic Acid, Choline, Inositol, Rutin.
- Minerals: Calcium, Phosphorus, Potassium, Iron, Copper, Iodine, **Zinc**, Sulfur, Sodium, Chlorine, Magnesium, Manganese, Molybdenum, Selenium, Boron, Silica, and Titanium.
- Other: Amino Acid, Carbohydrates, Fatty Acids, Enzymes & Co-Enzymes, Fats.

Khasiat Propolis

Propolis terbentuk dari bahan resin yang diambil lebah dari pohon yang mengandung getah. Lebah kelulut kemudian memprosesnya sehingga membentuk propolis, bahan yang berwarna hitam, kuning atau coklat tua di sarang lebah kelulut.



kelablebahkelulut.com / Ad Dk

Antara khasiat perubatan bagi propolis secara umum:

1. mempunyai sifat antibiotik, anti radang dan merangsang penghasilan antibodi (meningkatkan imuniti),
2. menguatkan kapilari darah, anti rheumatik, anti asma, anti kanser dan anti-oxidant.
3. Propolis banyak digunakan untuk rawatan yang berkaitan dengan alahan, batuk, demam, selsema, penyakit dan masalah yang berkaitan sistem darah dan penafasan.

Propolis- kegunaan masa kini

Bahan Kosmetik

- Ekstrak propolis banyak digunakan untuk rawatan kulit memandangkan ianya boleh membantu melambat proses penuaan disamping sifat anti bakteria.

Perubatan

- Kegunaan umum propolis dalam perubatan ialah untuk masalah yang berkaitan dengan jantung dan darah (anaemia), rawatan gigi, rawatan kulit (disebabkan kelencuran, menyembuh luka dll), rawatan kanser, sistem penghadaman (ulcer) dan rawatan hati.

Industri Makanan

- Digunakan sebagai bahan pengawet kerana ianya mempunyai sifat anti bakterian & kulat.

Pertanian

- Digunakan sebagai bahan anti perosak tanaman. Ianya digunakan sebagai phyto inhibitor (menghalang biji benih dari tercabah)



STINGLESS BEE FARM



Aktiviti Penuaian Madu









AGRO-TOURISM & EDU-TOURISMS CONCEPT









9



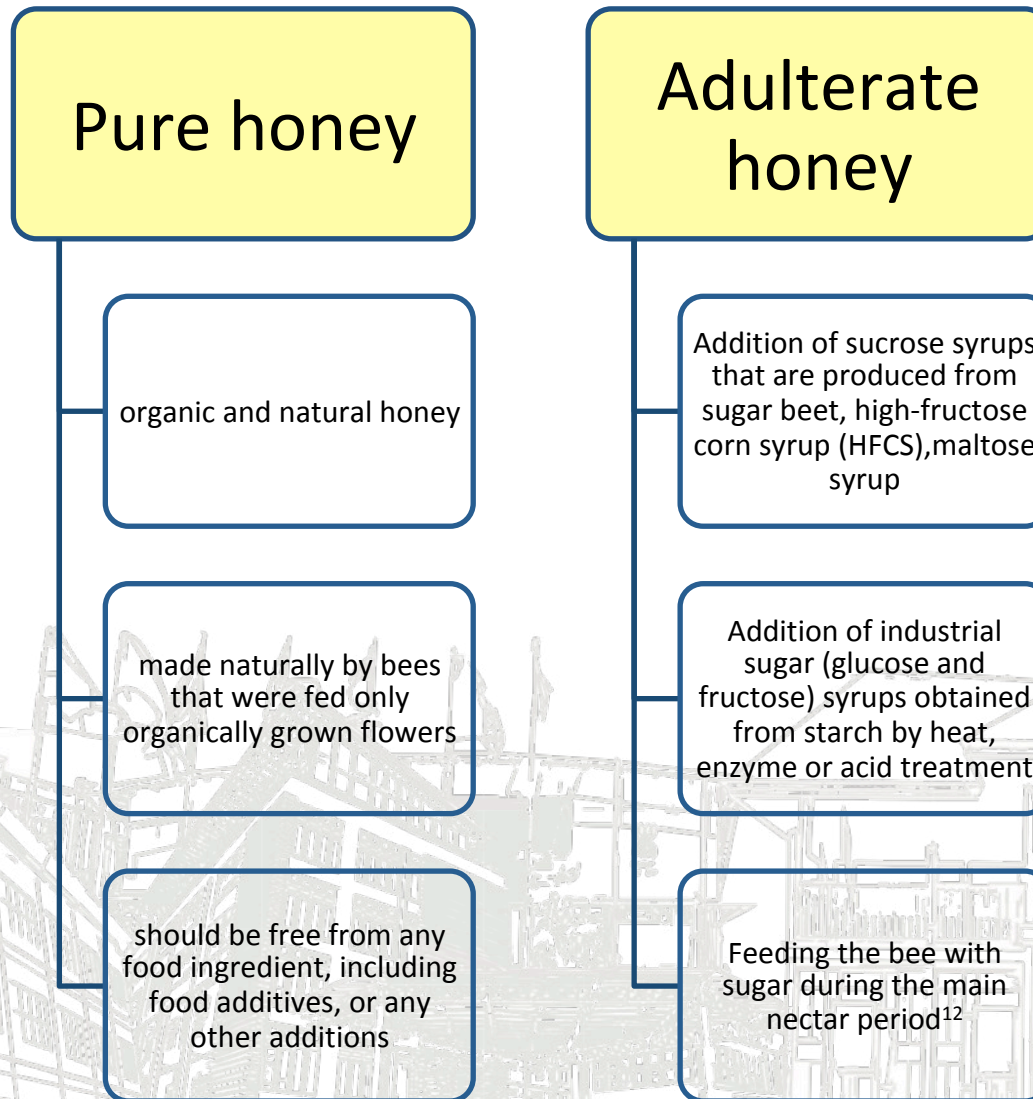
RESEARCH & DEVELOPMENT (R&D)



Arising problem with honey in market

- The limited availability and increasing price of pure honey has led to the problem of honey adulteration and production of artificial honey in the market
- Adulteration activity of honey has increased the awareness among the honey consumers about the quality and purity of the commercial honey in the market.
- Adulteration : The immoral act of producers by adding sugar syrups into natural product ¹¹

Pure honey and adulterate honey



Analysis to detect adulteration

- **Classical methods – Characterization of honey**
 - Physicochemical analysis
 - Enzymatic analysis
 - Microbiological analysis
- **Advanced methods¹³:**
 - Electrochemical analysis
 - Thin layer chromatography (TLC)
 - Carbon isotopy,
 - Flow injection analysis
 - Gas chromatography (GC)
 - High-performance liquid chromatography (HPLC)
 - Anion-exchange liquid chromatography (LC)
 - Fourier transform infrared spectroscopy (FTIR)
 - Differential scanning calorimetry (DSC)
 - Mid-infrared, near-infrared (NIR) transfectance spectroscopy
 - Gas chromatography-mass spectrometry (GC-MS)
 - High performance (HP) anion exchange chromatography with pulsed amperometric detection method (HPAEC- PAD)
 - High performance thin layer chromatography (HPTLC)
 - Isotope ratio mass spectrometry coupled with an elemental analyzer, and low field nuclear magnetic resonance

Characterization of honey

Sample Collection

- Six samples of stingless bees honey were collected
- Followed the method of Malaysian Kelulut standard and Harmonised Methods of the International Honey Commission

Physicochemical Analyses

- pH
- Moisture content
- Free acidity
- Electrical Conductivity
- Ash content
- Hydroxymethylfurfural (HMF)
- Sugar content

Enzymatic analysis

- Diastase activity
- Invertase activity

Microbiological Analyses

- Standard plate count
- Detection of total coliform
- Yeast and mould count

Table 1. Sampling Location, description and time collection of six sample of stingless bee honey from Malaysia

Sample Code	Description	Sampling Location	Time of collection
H1	Harvested honey (Reference)	Pahang	March, 2017
H2	Harvested honey	Pahang	April, 2017
H3	Commercial honey	Selangor	October, 2017
H4	Commercial honey	Kedah	October, 2017
H5	Commercial honey	Kuala Lumpur	November, 2017
H6	Commercial honey	Pahang	September, 2017

Physicochemical Analysis

Table 2: Summary of physicochemical analyses of six sample of stingless bee honey from Malaysia, (mean \pm standard deviation, n = 3)

Samples	pH	Moisture (%)	F.A (meq/kg)	EC (mS/cm)	Ash (g/100g)	HMF (mg/kg)
H1	3.26 \pm 0.11	25.4 \pm 0.09	146.4 \pm 7.46	0.56 \pm 0.01	3.11 \pm 0.23	74.3 \pm 6.88
H2	3.20 \pm 0.08	30.9 \pm 0.06	121.1 \pm 1.24	0.33 \pm 0.01	0.72 \pm 0.11	85.9 \pm 8.40
H3	2.52 \pm 0.03	23.4 \pm 0.53	257.8 \pm 2.39	0.68 \pm 0.01	2.75 \pm 1.12	457.2 \pm 0.81
H4	2.79 \pm 0.01	28.4 \pm 0.51	318.7 \pm 77.6	0.40 \pm 0.03	3.86 \pm 1.02	35.4 \pm 0.71
H5	2.51 \pm 0.01	19.4 \pm 0.21	250.7 \pm 3.19	0.69 \pm 0.06	4.31 \pm 1.53	461.7 \pm 5.69
H6	2.57 \pm 0.01	26.7 \pm 0.61	241.7 \pm 3.46	0.65 \pm 0.04	0.52 \pm 0.16	456.6 \pm 2.72
Mean \pm SD	2.81 \pm 0.34	25.7 \pm 4.01	222.7 \pm 74.5	0.55 \pm 0.15	2.54 \pm 1.58	261.8 \pm 216.1
Min Value	2.51	19.4	121.1	0.33	0.52	35.4
Max Value	3.26	30.9	257.8	0.69	4.31	461.7

Table 3: Summary of Sugar profile of six sample of stingless bee honey from Malaysia (mean \pm standard deviation, n = 3)

Samples	Fructose (g/100g)	Glucose (g/100g)	Sucrose (g/100g)	F+G (g/100g)	F/G
H1	17.5 \pm 1.3	16 \pm 0.8	< 0.01	33.5 \pm 2.27	1.10 \pm 0.10
H2	15.03 \pm 1.22	12.17 \pm 0.47	< 0.01	27.2 \pm 0.69	1.24 \pm 0.09
H3	30.96 \pm 0.81	31.6 \pm 0.79	1.10 \pm 0.03	62.56 \pm 1.53	0.98 \pm 0.02
H4	32.52 \pm 0.59	30.09 \pm 0.70	< 0.01	62.62 \pm 0.67	1.08 \pm 0.04
H5	31.64 \pm 0.48	34.55 \pm 0.50	2.81 \pm 0.09	66.19 \pm 0.95	0.92 \pm 0.01
H6	22.83 \pm 0.42	25.47 \pm 0.50	7.29 \pm 0.18	48.3 \pm 0.95	0.89 \pm 0.01
Mean \pm SD	25.08 \pm 7.70	24.98 \pm 9.02	3.73 \pm 3.20	50.06 \pm 16.6	1.03 \pm 0.13

F + G: Summation of fructose and glucose; F/G: Ratio of fructose to glucose

- Results shows that the pH, moisture content, free acidity, electrical conductivity and ash content are quite similar for all samples
- Generally, these parameters are influenced by geographical origin, floral sources as well as the bee's species¹⁴
- Most notable parameters for quality criteria in honey are HMF content and sugar content
- Hydroxymethylfurfural or HMF literally absence in fresh honey however the values are increasing during processing, preparation, aging and storage of honey¹⁵.
- High HMF content in honeys also demonstrate the fabrication of honey with invert syrup¹⁶

- In a good quality honey, the fructose content should exceed the glucose content¹⁷ and this can be seen in three samples (H3, H5 and H6), thus, the three honeys probably is a poor quality honey.
- Harvested honey samples has lower fructose and glucose content compare to other commercial samples but still comparable with the study of stingless bee honey from Thailand¹⁸ and from Malaysia⁴
 - If the sucrose concentration is high, it may due to^{14,19,20}:
 - Diversity of floral sources,
 - Early harvest of honey as the sucrose not fully transform into fructose and glucose,
 - Overfeeding the bees with sugars, syrups or artificial honey
 - Addition of commercial sugar

Enzymatic Analysis

Table 4: Summary of predominant enzyme activity of stingless bee honey samples from Malaysia (mean \pm standard deviation, n = 3)

Samples	Diastase Number (DN)	Invertase Number (IN)
H1	5.97 \pm 0.18	ND
H2	5.85 \pm 0.08	ND
H3	2.32 \pm 0.12	3.2 \pm 0.18
H4	6.30 \pm 1.16	ND
H5	2.16 \pm 0.13	2.19 \pm 0.07
H6	2.79 \pm 0.01	1.82 \pm 0.07
Mean \pm SD	4.23 \pm 1.99	2.40 \pm 0.71

- Diastase are regarded as one of quality criteria by international standard where the values is influenced by honey storage and heating²¹
- H3, H5 and H6 samples has low DN number which may mean that these honey is aging or has been heated since enzymes are susceptible towards heat²²
- Three honey samples (H1, H2 and H4) has almost none Invertase content which may suggest that it is a natural feature of these honey, rather than an index of scarce freshness or lowered in quality.
- Both diastase and invertase activities are steadily deteriorate on prolonged storage and heating of honey¹⁷

21. Bogdanov et al., 1999; 22. Iftikhar et al., 2014; 23. Pasiyas et al., 2017

Microbiological Analysis

Table 5 Summary of microbial profile of honey samples from Malaysia.

Sample	Microbial count (x 10 ² cfu/g)			
	SPC	Total coliform	Yeast	Mould
H1	2.0 x 10 ²	D	ND	ND
	1.5 x 10 ²			
	1.0 x 10 ²			
H2	3.0 x 10 ²	ND	ND	ND
	8.0 x 10 ²			
	4.4 x 10 ²			
H3	3.6 x 10 ²	D	D	D
	4.5 x 10 ²			
	1.5 x 10 ²			
H4	2.6 x 10 ²	ND	D	D
	2.7 x 10 ²			
	9.7 x 10 ²			
H5	1.5 x 10 ²	ND	D	D
	2.2 x 10 ²			
	3.5 x 10 ²			
H6	1.0 x 10 ²	ND	ND	ND
	1.0 x 10 ²			
	1.0 x 10 ²			

SPC: Standard Plate Count; D = Detectable; ND=Not Detectable

- The low counts and limited variety of microbes is expected because of honey antibacterial properties against the growth or persistence of many organisms^{17,24}
- Bacterial growth was found in most of the honey samples, expressing poor hygienic procedures during harvesting, packaging or storage.
- Two sources of microbial contaminations²⁵ :
 - Primary sources (pollen, air)
 - Secondary sources (Honey post-harvest)

Table 6 Microbial contaminant limits for stingless bee honey

Characteristics	Limits of Stingless Bee Standard (Malaysia)
Total plate count, CFU/mL	1 x 10 ³
Total coliform, CFU/ mL	Less than 1 x 10 ¹
Yeast and mould, CFU/mL	Less than 1 x 10 ¹

Table 6 Physicochemical analysis of honey samples from Malaysia

Parameter	Mean ± SD	Range values (Min - Max)	Limits of honey Int'l Standards	Limits of Stingless Bee Standard (Malaysia)
PH	2.81± 0.34	2.51-3.26	No fix limit	2.5 – 3.8
Moisture (%)	25.7 ± 4.01	19.4 - 30.9	Not > 20%	Not > 35 %
Free Acidity (meq/kg)	222.7 ± 74.5	121.1 - 257.8	Not > 50 meq/kg	No fix limit
EC (mS/cm)	0.55 ± 0.15	0.33 - 0.69	Not > 0.8 mS/cm	Not fix limit
Ash (g/100 g)	2.54 ± 1.58	0.52 - 4.31	Not > 0.6 g/100 g	Not > 1.0 g/100 g
HMF (Mg/kg)	261.8 ± 216.1	35.5 - 461.7	Not > 40 mg/kg and for tropical honey not > 80 mg/kg	Not > 30 mg/kg
Fructose and Glucose (sum)	50.06 ± 16.6	27.2 – 66.19	Not < 60 g/100g	Not > 90.0
Sucrose (g/100 g)	3.73 ± 3.20	0.01 – 7.29	Not > 5 g/100 g	Not > 8.0 g/100 g

Table 7 Enzyme activity for honey samples from Malaysia

Parameter	Mean ± SD	Range values (Min - Max)	Limits of honey Int'l Standards	Limits of Stingless Bee Standard (Malaysia)
Diastase Activity (DN)	4.23 ± 2.00	2.16 - 6.30	Not < 8 DN	No fix limit
Invertase Activity (IN)	2.40 ± 0.71	ND – 3.2	Not < 4 IN	No fix limit



COMMERCIALIZED PRODUCTS





**Royal
Softgel**

**Honey
Lip balm**

**Stingless
Bee Honey
Product**

**Honey
Banana
Powder**



**Honey
Herbal Soap**



Royal Softgel Stingless Bee Honey



3 in 1



Olive Oil



Black Seed Oil



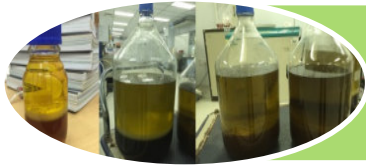
Stingless Honey



ZQUAT™ ROYAL SOFTGEL MADU KELULUT



Process of Soft gelatin honey encapsulation



3 different layers of raw material



Pre-processing - water removal



Homogenizer pressure agitation



Stabilized product after mixing process



Soft gelatin product



PATENT (IP PRODUCT)

REGISTERED TRADEMARK 'ZQUAT' & PATENTED UNDER MYIPO

1

SOFTGEL CAPSULE AND A METHOD OF PREPARING THEREOF

FIELD OF THE INVENTION

5 The present invention relates to preparation of capsules containing oil and honey, particularly preparation of softgel capsules from combination of trigona honey, olive oil and black seed oil.

BACKGROUND OF THE INVENTION

10 Trigona honey from trigona bees, which is largest genus of stingless bees from meliponini tribe, is classified as one of the best honey in Malaysia since the trigona honey contains protein, minerals, multivitamins, useful microbes and enzymes. The trigona honey with antioxidant and antibacterial properties is used to treat gut-based diseases, internal injuries/wounds and coughs. Also, the trigona honey contains various types of phenolic acids that are useful for consumption.

15 Olive oil from olives (known by the botanical name *Olea europaea*) is a best source of vitamin, amino acid and minerals. Natural polyphenol in olive helps to reduce oxidative pressure in brain. Moreover, intake of the olive oil increases good cholesterol in body, whereby it prevents formation of plaques in blood vessels. Presence of antioxidant in the olive oil helps to reduce high blood pressure risks.

20 Black cumin seed oil also known as black coriander oil or simply black seed oil comes from *Nigella Sativa* plant that is native to Asia. The black seed oil comprises of crystalline nigellone and thymoquinone as active compound, as well as myristic acid, palmitic acid, stearic acid, palmitoleic acid, oleic acid, linoleic acid, arachidonic acid, proteins and vitamins B1, B2, B3, calcium, folate, iron, copper, zinc and phosphorous. These minerals and the vitamins are all important to keep the body healthy.

25 At present, nutraceutical softgel capsules are manufactured using one or two raw materials with equal compositions such as production of softgel capsules containing olive oil and black seed oil. However, it is difficult to prepare softgel

5

b) Encapsulation process

- i. the stabilized mixture (obtained from the present invention) is then filled into prepared gelatin using an encapsulator to produce softgels;
- 5 ii. thereafter, the softgels will be sent to a tumbler dryer to remove thin layers of mineral oil from surfaces of the softgels, which actually accelerates the drying process by 50%;
- 10 iii. the softgels are then further dried in a drying room for a duration of 36 to 72 hours; and
- iv. finally, the softgels are inspected and sorted for malformed, damage and improper filled softgels.

15 Prior to the mixing of all the three raw materials, both the trigona honey and the olive oil are directed to pre-treatment step to reduce water content within them to at most 5% by weight. Water content of the trigona honey and the olive oil are of 25% and 30% by weight, respectively. The pre-treatment step is carried out by way of but not limited to vacuum drying. The vacuum drying step is a useful tool for products that are heat-sensitive, especially for products related to trigona honey.

20 The trigona honey will be placed in a dryer container, whereby temperature of the dryer will be set at a temperature of 45°C. Alternatively, the temperature of the dryer will be set at a temperature of 50°C if enzyme and microbes optimization is applied. The vacuum drying is operated up to 8 hours at a high vacuum rate of 1×10^{-3} to 1×10^{-7} cm²/s before the mixing of all the three raw materials is initiated.

25 Vacuum drying is used instead of conventional method such as heating to prevent denaturing of active compounds and/or active ingredients (as discussed in the background art section) such as but not limited to useful microbes and enzymes present within both the trigona honey and the olive oil. Presence of water in both the trigona honey and the olive oil inhibit homogenous mixing of all the three raw materials, and hence, leading to formation of unstable end product, the softgel capsules. It is said to form unstable end product due to the following reasons:



- ▶ Additional food supplement
- ▶ Halal
- ▶ Good Manufacturing Practices (GMP) factory
- ▶ Suitable for pregnant women
- ▶ Good for kids and adult
- ▶ 1 bottle (60 capsules)

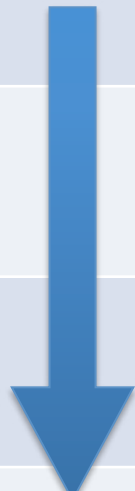
Benefits of Softgel Stingless Bee Honey



- High in vitamins and minerals for body needed
- Prevention and treatment of various diseases such as stroke, cancer asthmatic, diabetes mellitus, hepatitis, hypertension, tuberculosis, kidney stones. Eczema.
- Overcome digestive problems, intestinal, gastric
- Improve the immune system
- Provide additional energy and increase metabolism
- Get rid of tiredness and lethargic body
- Improve blood circulation
- Reduce the risk of heart attack
- Very nutritious for the baby and pregnancy women
- Slow down aging skin process and as a natural beauty care
- Helps to improve memory
- Good for mental development

REVENUE

BIL	ITEM		FORMULASI	KOS (RM)
1.	HARGA MADU KELULUT ASLI	120/KG	4KG	480
2.	CAPSULES SOFTGEL	-	100,000	
3.	BOTOL	PER BOTOL/50 CAPSULES	1500	
NILAI JUALAN (RM80/BOTOL)				120,000



SASARAN JUALAN TAHUNAN

BIL	ITEM		Bahan Mentah Diperlukan
1.	Pengeluaran Botol Setahun	100,000	800 kg – madu 3,000 kg - olive
2.	Capsules Softgel diperlukan	5,000,000	
JUMLAH KEUNTUNGAN (RM80/BOTOL)			8,000,000

TONGKAT ALI MADU KELULUT (Fermented Organic Viagra)



Honey Banana Powder



Used as additional flavors for food and drinks.

Process of Honey Banana Powder





Honey Herbal Soap



Cassia Leaf



Quercus Infectoria
seed



Labisia pumila



Cinnamon



Turmeric



Stingless Honey



Lemon



Jojoba Seed



CASSIA LEAF SOAP

FEMININE SOAP

STINGLESS HONEY SOAP

JOJOBA SOAP

- Eczema
- Itching
- Rashes
- Shingles
- Scabies

CASSIA LEAF SOAP



- Prevent vaginal discharge and odor
- Relieve itching
- Remove blackish around thigh gap
- Grip and tightening

FEMININE SOAP



- Remove dead skin cells
- Provide moisture to the skin
- Reduce acne problems
- Get rid of acne scars
- Skin whitening
- Prevent skin aging

STINGLESS HONEY SOAP



- Reduce freckles, pigmentation
- Healing acne problem
- Acne scars removal
- Moisturize skin
- Reduce dark spot (whitehead and blackhead)

JOJOBA SOAP



Honey Lip Balm



- Natural ingredients, paraben free
- The best remedy for chapped lips
- Make lips softer and shinier
- Moisturize lips
- Continuous usage can make your lips naturally pink
- Safe for use by kids

2 colors : Chili Red and Rose Red





FEED BACK CUSTOMERS

ROYAL SOFTGEL STINGLESS BEE
HONEY

ECZEMA



EKZEMA

assalam dato' .. Alhamdulillah . baru sapu dua kali . kuping dah tanggal . luka dh kering .. sgt2 berpuas hati . semoga dato' dimurahkn lg rzeki dan dimajukn lg perniagaan . aminn



sblm ni dh mcm2 ubt try . dari yg mahal ke murah . dari hospital swasta ke kerajaan . ubat yg jual online pun sy cuba ..semua xjalan .. smpi sy dh fedup nk try apa2 product lagi .. skg Alhmdulillah . Allah temukn sy dgn dato' ' .. dato' kenalkn product dato' .. sgt2 serasi .. eczema ank sy kering dah xberair lagi . Alhmdulillah .. tm kaseh dato' ziad .

Roger sir 10:58 AM
 Ok tn 10:58 AM
 Sy ni jenis ada ekzima.. kurang byk juga
 Lbh brtenaga.. tu yg pnting
 Wkakaaka 10:58 AM
 bila start makan softgel tue bila nampak kesan dia
 Dlm 2 minggu juga
 Sy mkn 1 kali sebiji je
 alhamdulillah 10:59 AM
 Klau 2 biji sehari blh smpai bulan agaknya

Mula2 sy mkn telan..
 Tp bosan lak.. 11:00 AM
 Try kemam kat mulut
 Lg syok rupanya.. 11:01 AM

Tp alhamdulillah sgt2 kak mkn madu akak anak2 lbh aktif,sihat n selera makan 11:32 AM
 Even ngan cuaca yg trk sgt2 ni 11:32 AM
 Dorg susah nk diserang batuk 11:33 AM
 Klu batuk alhamdulillah sehari dh recovered 11:33 AM

Tel: 011-10990409

DIABETES

DIABETES



Hari ni check kmanis abg 6 8:47 PM

Lepas mkn ubat yat 8:47 PM

Sblum tu 19 8:47 PM

Mak sy sakit diabetes 4:49 PM

Sblm ni dia xselera mkn sbb level gula yg tinggi..awal pg pon 7 n klu mkn nasi akan up to 12 ke atas 4:50 PM

Sampai jd sgt kurus..so sy suh dia mkn royal zquat 4:50 PM

Alhamdulillah sgt2..sgt serasi ngan mak sy 4:50 PM

Dia happy sgt skrg sbb bacaan dh jd 4..dia ckp xprnh seumur hidup dia dpt bacaan 4 sejak kene diabetis 4:51 PM

Even lps mkn nasi pon plg tggu 7.7 je 4:51 PM

Alhamdulillah skrg dh selera blk mkn..n dh brtambah sihat 4:51 PM

Terima kasih sgt2 ye zquat!! alhamdulillah 4:52 PM

Semoga dpt mmbntu lbh ramai pesakit diabetik kat luar sana 4:52 PM



Tel: 011-10990409

TUBERCULOSIS

QUAT™ Masalah batu karang

saya telah mengalami batu karang dalam buah pinggang, setelah membuat pemeriksaan doktor didapati uric acid dan creatinine tinggi 10:18 A.M.

kemudian saya telah cuba mengamalkan zquat, iaitu sebulan sebelum saya membuat ujian darah di hospital. 10:20 A.M.

Alhamdulillah..keputusan ujian darah menunjukkan terdapat penurunan urid acid dan creatinine setelah sebulan mengamalkan zquat..saya ambil 2 biji malam dan 2 biji pagi.. 10:22 A.M.

dan sehingga sekarang saya masih lagi meneruskan makan zquat. 10:22 A.M.

Alhamdulillah... 10:53 A.M.

Terima kasih en azrul 10:53 A.M.

sama² 10:53 A.M.

Sebelum mengamalkan ZQUAT

Lab Sample No:	07427355	SPI	
Name:	Azrul Azam Bin Saadri	Mr	
Patient I/C:	77052808	Doctor:	
Patient MRN:	275831	Date Taken:	28/04/2015 15:25
Age:	37	Date Received:	12/05/2015 15:51
Sex:	M	Report Status:	FINAL

TEST	RESULT
RENAL FUNCTION TESTS	
Urea Nitrogen	11.2 H
Creatinine	119 H
CHEMISTRY	
Calcium	2.61 H
In. Phosphate	1.34
Magnesium	0.96
Uric Acid	444 H

Selepas

Lab Sample No:	08412191	SPI	
Name:	Azrul Azam Bin Saadri	Mr	
Patient I/C:	77052808	Doctor:	
Patient MRN:	275831	Date Taken:	12/04/2016 11:19
Age:	38	Date Received:	30/05/2016 15:12
Sex:	M	Report Status:	FINAL

TEST	RESULT	UNITS	RANGE	REMARKS
Routine Chemistry Tests				
Chloride	101	mmol/L	98-107	Indirect Ion Sel
Creatinine	98	umol/L	62-106	Kinetic-Jaffe M
CHEMISTRY				
Uric Acid	303	umol/L	202-417	Uricase/4-aminop

Tel: 011-10990409

DIGESTIVE'S PROBLEM

PENCERNAAN DAN SEMBELIT

Sori boh..baru bukok itenet.. 7:41 P.M.

Okey..hari ke 2 ni..ade lah sikik progres..berak best sikit..pagi td pun buang air comel.. 7:43 P.M.

Alhamdulillah... continue makan 7:51 P.M. ✓✓

👍 7:54 P.M.

Tuan. Zquat bila boleh saya dpt.. nak beli.. bagi isteri saya makan.. 12:48 PM

Yg ari tu dia makan.. kesan yg paling ketara ialah pencernaan . Dia dot ke toilet setiap hari.. ni dah 2 minggu putus stok.. dah kembali susah ke toilet 12:50 PM

Wife aku kata anak aku kurang sembelit semalam. Baru sekali bagi pecahkan gel letak dlm air milo dia 8:19

ok boss tq...
Alhamdulillah

Hajah dah cuba amalkan products ZQUAT? Macam mana yea? Ada kesan positive? 6:21 PM ✓✓

Walaikumsalam wb. Dh mkn 2 biji mlm sebelum tidur je...yg saya perasan pembuangan air besar saya agak lancar & normal berbanding sebelumnya yg kadang2 mengalami kesukaran / semebelit.. 7:16 PM



Tel: 011-10990409

ENERGY BOOSTER

Bila mkn produk Z Quat ni, baru beberapa biji je...abg dah terasa tindakan @ kesan pada kesihatan badan abg...antaranya, bila buang air besar...mmg lancar dan agak mudah...dan satu lagi, badan ni rasa dan terasa, bertenaga sepanjang hari, (kurang rasa letih2 badan..) sama jugak dgn kak bie..dia dpt rasakan yg produk Z Quat ni..ada kelebihan yg bagus, lebih2 lagi, dia berasaskan makanan sunnah...itu keberkatannya.. Tahniah Prof Ziad...moga terus maju dan hebat, dgn produk Z Quat ni..untuk Ummah yg lebih sihat...

9:20 AM

MEMBERI TENAGA TAMBAHAN

Macam mana yea? Ada kesan positive?

6:21 PM ✓

Walaikumussalam suhada. 😊
Alhamdulillah kandungan sy dh nk msk 2 bln. Stkt ni ksn yg ketara sy tak mengalami ape2 alahan & cergas je time bt keje.. 😊

6:37 PM

Alhamdulillah, syukur...semoga Puan dan baby sentiasa sihat dan dipermudahkan urusan. 😊

6:42 PM ✓

InshaAllah. Aamiin. Thanks suhada & team ZQUAT semoga terus berjaya dlm mengeluarkan products2 sunah yg hebat. 😊

6:45 PM

ak tanya..macam mana u zquat??ada apa-apa perubahan lepas makan?berapa hari sudah makan??

12:07 PM ✓

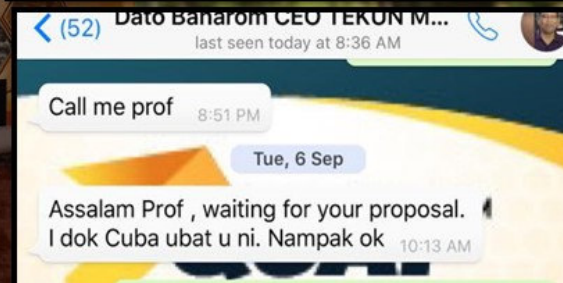
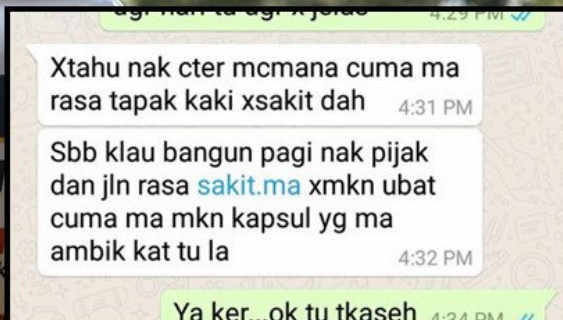
Tedapat perubahan nya tangan kebas berasa hilang barru. Makan 2hari.

2:05 PM

Tel: 011-10990409

GOUT/ ARTHRITIS

GOUT DAN PENAMBAHAN TENAGA



Tel: 011-10990409

NERVE PROBLEM – NUMB HAND

KEBAS TANGAN DAN ANGIN DALAM BADAN

ada rasa perubahan tak? 11:23 AM ✓

Wsalam 11:27 AM

Tgn dah xkebas 11:29 AM

Selalu bwk moto jauh kebas 11:29 AM

ok.. 11:30 AM ✓

terima kasih kerana mencuba product zquat..

Ada rasa perubahan ke 11:01 A.M. ✓

dah 11:27 A.M.

angin banyak.lah keluar 11:27 A.M.

badan pong rasa ok siket 11:27 A.M.

bersin pagi2 dah kurang 11:27 A.M.

tgk dalam seminggu konsisten makan 11:28 A.M.

sebab baru ni main doroyan 11:28 A.M.

tu makan x makan 11:28 A.M.

Alhamdulillah 11:42 A.M. ✓

Amal lah, beri lah pa bapa

Ada rasa perubahan ke 11:54 A.M. ✓

Wasalaam zy, kluar byk angin.. ringan tubuh 12:07 P.M.

Alhamdulillah 12:07 P.M. ✓

Amalkan lah, disyorkan utk semua lapisan umur. Anak2 isteri mengandung pun boleh 12:08 P.M. ✓

Ok zy, tg 12:14 P.M.

kawan un..nak tanya..macam mana makan madu zquat??ada apa-apa perubahan lepas makan?berapa hari sudah makan?? 12:07 PM ✓

Tedapat perubahan nya tangan kebas berasa hilang barru. Makan 2hari. 2:05 PM

Tel: 011-10990409



EVENT



Pesta Pantai Timur, Angsana Mall, Johor Bharu



Tel: 011-10990409

Halalfest Malaysia 2016, Sri Kembangan



Tel: 011-10990409



Agriculture, Horticulture & Agrotourism (MAHA) 2016 at MAEPS, Serdang, Malaysia



International Market (Maldives)





FUTURE PRODUCT



HONEY HOT BALM



- Relieve joint pain
- Headache
- Muscle pain
- Flatulence
- Reduce itching from mosquito bites

HONEY TOOTHPASTE



- The presence of honey as an antibacterial for fresh breath and clean teeth
- Restore gum problems (gum disease)
- Prevent cavities
- To heal small cuts on the gums
- Reduce mouth ulcers

HONEY SHAMPOO



- Natural ingredients
- To nourish the hair
- Eliminate itching of the scalp
- Softens the hair
- Eliminate dandruff
- Strengthens hair roots

PROPOLIS MINERAL WATER

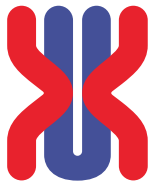


- Propolis is high in antibiotic properties
- Anti-inflammatory and stimulates the production of antibodies (enhance immunity)
- Strengthens capillaries
- Anti-rheumatic
- Anti-asthmatic
- Anti-cancer
- High in antioxidant



THANK YOU


Medicine is not healthcare. Food is health care. Medicine is sickcare. It's time we see it for what it is.




Universiti Malaysia
KELANTAN

PROFESOR. IR. Ts. DR. AHMAD ZIAD BIN SULAIMAN
PhD (Massey NZ), PEng.P.C. (BEM), PTech (MBOT)
Profesor

Tel : 09 – 9477 123 (HP) 019 9000 409
Fax : 09 - 9477 012
Emel : ziad@umk.edu.my

 **Kampus Kota**
Karung Berkunci 36, Pengkalan Chepa,
16100 Kota Bharu. Kelantan.

 +609 - 771 7000

 **Kampus Bachok**
Beg Berkunci No. 01,
16300 Bachok, Kelantan.

 +609-7797000

 **Kampus Jeli**
Beg Berkunci No. 100,
17600 Jeli, Kelantan.

 +609-9477000



webmaster@umk.edu.my



www.facebook.com/UMKelantan



www.umk.edu.my



www.twitter.com/UMK_19